

Product datasheet

Specifications



Ø22 mm pushbutton head - metal - unmarked

ZB2BA3C

Main

Range of product	Easy Harmony XB2
Product or component type	Head for non-illuminated push-button
Device short name	XB2
Bezel material	Chromium plated metal
Mounting diameter	22.5 mm
Sale per indivisible quantity	1
Marking	Unmarked
Device presentation	Basic element

Complementary

Product destination	Push-button
Product compatibility	XB2..C
Head type	Standard
Shape of signaling unit head	Round
Type of operator	spring return
Reset	Spring reset
Operator profile	Green flush, unmarked
Mechanical durability	3000000 cycles
Height	29 mm
width	29 mm
Depth	27 mm
Net weight	0.03 kg
Cap/operator or lens colour	Green
customizable	No
Type of operator	Spring return

Environment

Protective treatment	TC/TH
Ambient air temperature for storage	-40...70 °C
Ambient air temperature for operation	-25...70 °C

Standards	IEC 60947-5-1 IEC 60947-5-4 IEC 60947-1 GB/T 14048.1 GB/T 14048.5
Product certifications	CCC CE
Vibration resistance	5 gn (f= 2...500 Hz) conforming to IEC 60068-2-6
Shock resistance	30 gn (duration = 18 ms) for half sine wave acceleration conforming to IEC 60068-2-27 50 gn (duration = 11 ms) for half sine wave acceleration conforming to IEC 60068-2-27
IP degree of protection	IP65
IK degree of protection	IK06

Packing Units

Unit Type of Package 1	PCE
Number of Units in Package 1	1
Package 1 Height	2.7 cm
Package 1 Width	2.91 cm
Package 1 Length	2.93 cm
Package 1 Weight	31.3 g
Unit Type of Package 2	S02
Number of Units in Package 2	150
Package 2 Height	15 cm
Package 2 Width	30 cm
Package 2 Length	40 cm
Package 2 Weight	5 kg
Unit Type of Package 3	P06
Number of Units in Package 3	3000
Package 3 Height	90 cm
Package 3 Width	60 cm
Package 3 Length	80 cm
Package 3 Weight	102 kg

Environmental Data

Schneider Electric aims to achieve Net Zero status by 2050 through supply chain partnerships, lower impact materials, and circularity via our ongoing “Use Better, Use Longer, Use Again” campaign to extend product lifetimes and recyclability.

[How this information helps you >](#)

Environmental footprint

Carbon footprint (kg.eq.CO2 per CR, Total Life cycle)	1
---	---

Environmental Disclosure

[Product Environmental Profile](#)

Use Better

Materials and Substances

Packaging without single use plastic	No
--------------------------------------	----

[EU RoHS Directive](#)

Pro-active compliance
(Product out of EU RoHS legal scope)

REACH Regulation

[REACH Declaration](#)

China RoHS Regulation

[China RoHS declaration](#)

Use Again

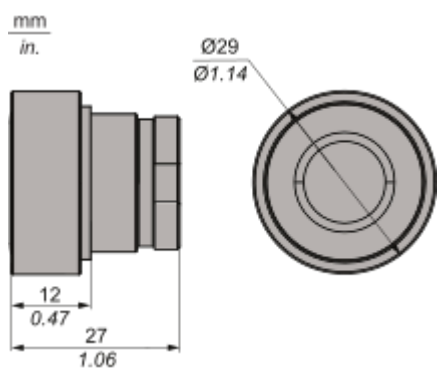
Repack and remanufacture

Circularity Profile	No need of specific recycling operations
---------------------	--

Take-back	No
-----------	----

Dimensions Drawings

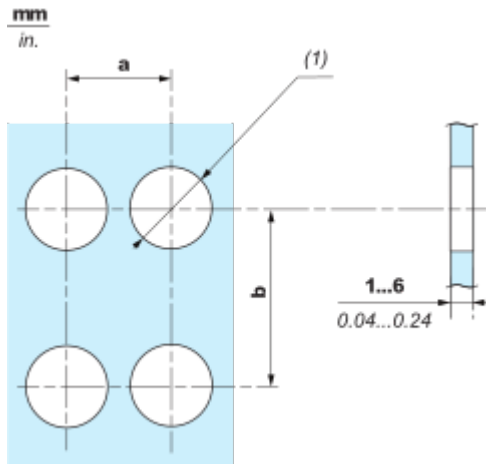
Dimensions



Mounting and Clearance

Mounting and Clearance

Panel cut-out

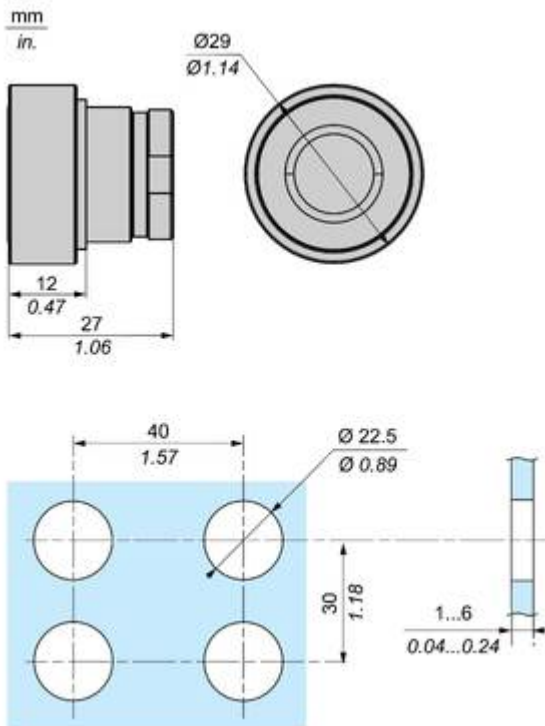


	Connection by Screw clamp terminals			
	a in mm	a in in.	b in mm	b in in.
•B2BA•C / •B2BL•C / •B2BP•C / •B2BS4•C / •B2BD•C / •B2BJ•C / •B2BG•C / •B2BW•C	40	1.57	30	1.18
•B2BC•C / •B2BS5•C / •B2BS8•C / •B2BT•C	40	1.57	40	1.57
•B2BR•C / •B2BS6•C	60	2.36	60	2.36

(1) $\varnothing 22.5 \text{ mm} / 0.89 \text{ in. recommended } (\varnothing 22.3 \text{ mm }_0^{+0.4} / 0.88 \text{ in. }_0^{+0.016})$

Technical Illustration

Dimensions



Offer Marketing Illustration

Product benefits / Features

Features
Easy Harmony XB2



- 

Metal bezels with metal fixing collars for impact endurance
- 

Designed to be used in numerous control and signaling applications
- 

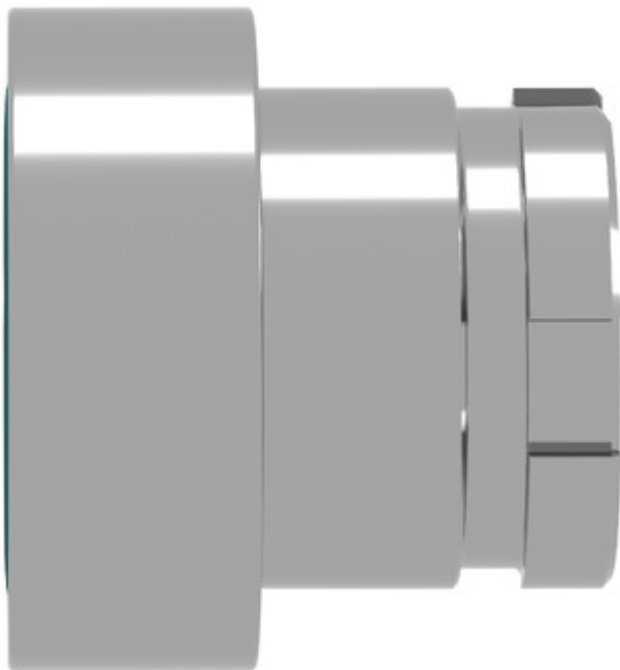
Metal screws for secure fix, grounding contact to the panel and anti-rotation
- 

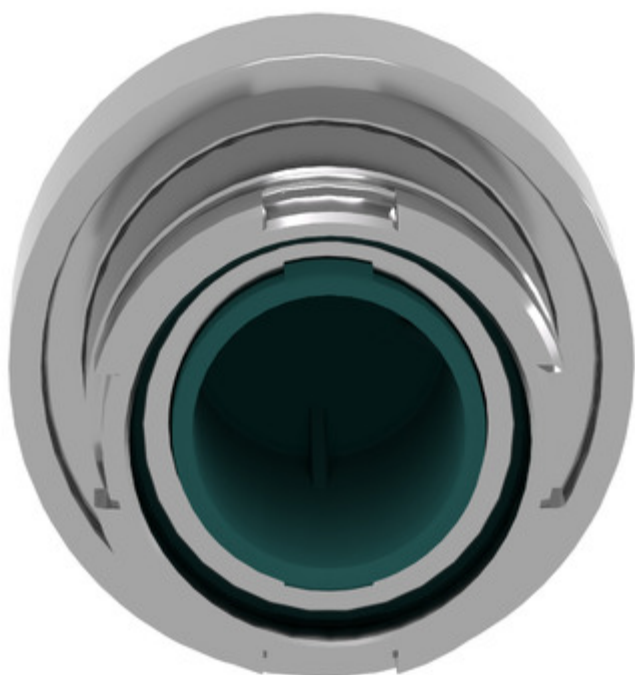
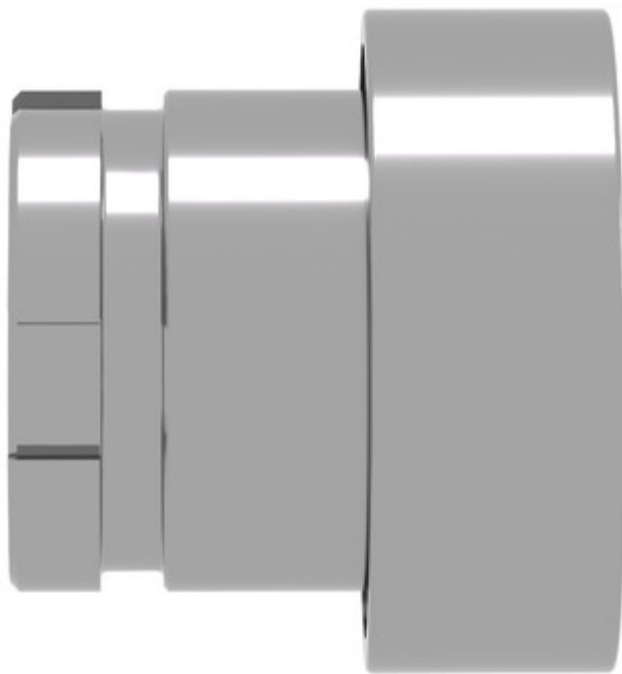
Simple modular design facilitates post installation servicing, modification and adaptation of machines by non-specialists
- 

Available in sub-assemblies for easy mix and match of functionalities

Image of product / Alternate images

Alternative





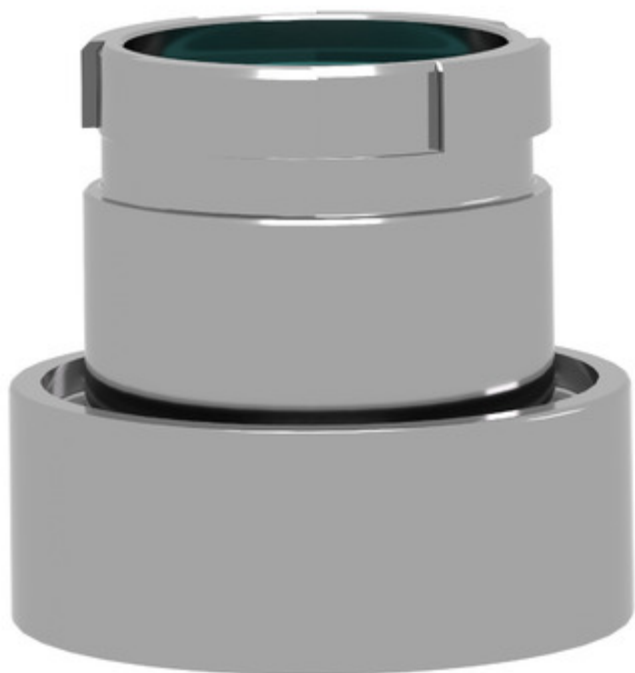


Image of product in real life situation

