

Product datasheet

Specifications



selector switch head - 2 positions Ø 22 - black

ZB2BD5C

Main

Range of product	Easy Harmony XB2
Product or component type	Head for selector switch
Component name	ZB2
Bezel material	Chromium plated metal
Device presentation	Basic element
Product compatibility	ZB2..C
Device short name	XB2
Head type	Standard

Complementary

Net weight	0.045 kg
Mounting diameter	22.5 mm
Height	29 mm
width	29 mm
Depth	41 mm
Operator position information	3 positions
Shape of signaling unit head	Round
Operator profile	Black
Type of operator	To centre spring return
Cap/operator or lens colour	Black
Marking	Unmarked
Mounting location	Front of enclosure
Sale per indivisible quantity	1
customizable	No
Operator profile	Standard handle
Type of operator	Spring return

Environment

Standards	IEC 60947-5-1 IEC 60947-5-4 IEC 60947-1 GB/T 14048.1 GB/T 14048.5
-----------	---

Ambient air temperature for operation	-25...70 °C
Ambient air temperature for storage	-40...70 °C
Vibration resistance	5 gn (f= 2...500 Hz) conforming to IEC 60068-2-6
Shock resistance	30 gn (duration = 18 ms) for half sine wave acceleration conforming to IEC 60068-2-27 50 gn (duration = 11 ms) for half sine wave acceleration conforming to IEC 60068-2-27
Protective treatment	TC/TH
IP degree of protection	IP65
IK degree of protection	IK06
Product certifications	CE CCC

Packing Units

Unit Type of Package 1	PCE
Number of Units in Package 1	1
Package 1 Height	2.894 cm
Package 1 Width	4.243 cm
Package 1 Length	4.3 cm
Package 1 Weight	44 g
Unit Type of Package 2	S02
Number of Units in Package 2	150
Package 2 Height	15 cm
Package 2 Width	30 cm
Package 2 Length	40 cm
Package 2 Weight	6.915 kg
Unit Type of Package 3	P12
Number of Units in Package 3	4800
Package 3 Height	105 cm
Package 3 Width	80 cm
Package 3 Length	120 cm
Package 3 Weight	244.4 kg

Environmental Data

Schneider Electric aims to achieve Net Zero status by 2050 through supply chain partnerships, lower impact materials, and circularity via our ongoing “Use Better, Use Longer, Use Again” campaign to extend product lifetimes and recyclability.

[How this information helps you >](#)

Environmental footprint

Carbon footprint (kg.eq.CO2 per CR, Total Life cycle)	1
---	---

Environmental Disclosure	Product Environmental Profile
--------------------------	---

Use Better

Materials and Substances

Packaging without single use plastic	No
--------------------------------------	----

EU RoHS Directive	Pro-active compliance (Product out of EU RoHS legal scope)
-----------------------------------	--

SCIP Number	9e63340a-2371-4381-8f9a-5fba0ff349a4
-------------	--------------------------------------

REACH Regulation	REACH Declaration
------------------	-----------------------------------

China RoHS Regulation	China RoHS declaration
-----------------------	--

Use Again

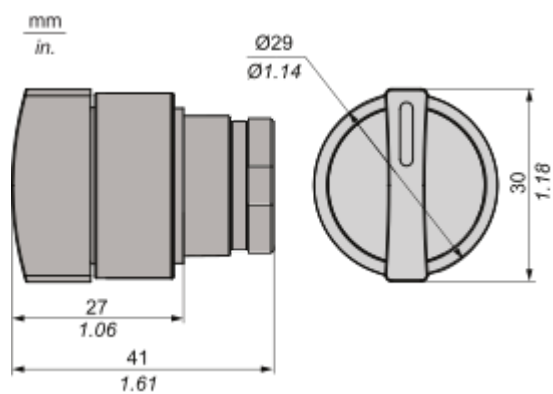
Repack and remanufacture

Circularity Profile	No need of specific recycling operations
---------------------	--

Take-back	No
-----------	----

Dimensions Drawings

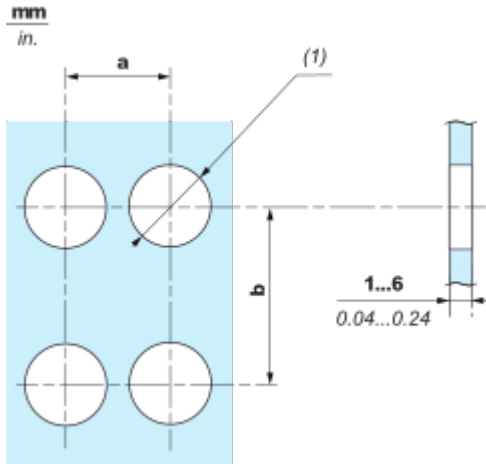
Dimensions



Mounting and Clearance

Mounting and Clearance

Panel cut-out

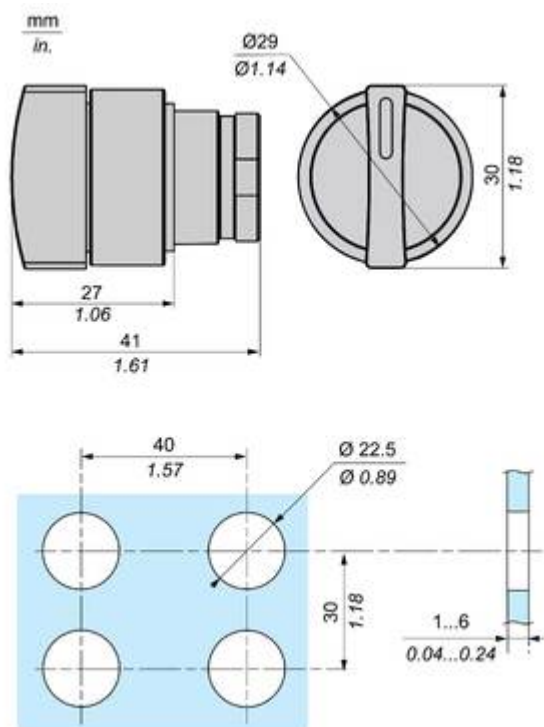


	Connection by Screw clamp terminals			
	a in mm	a in in.	b in mm	b in in.
•B2BA•C / •B2BL•C / •B2BP•C / •B2BS4•C / •B2BD•C / •B2BJ•C / •B2BG•C / •B2BW•C	40	1.57	30	1.18
•B2BC•C / •B2BS5•C / •B2BS8•C / •B2BT•C	40	1.57	40	1.57
•B2BR•C / •B2BS6•C	60	2.36	60	2.36

(1) $\varnothing 22.5 \text{ mm} / 0.89 \text{ in. recommended } (\varnothing 22.3 \text{ mm }_0^{+0.4} / 0.88 \text{ in. }_0^{+0.016})$

Technical Illustration

Dimensions



Offer Marketing Illustration

Product benefits / Features

Features
Easy Harmony XB2



- 

Metal bezels with metal fixing collars for impact endurance
- 

Designed to be used in numerous control and signaling applications
- 

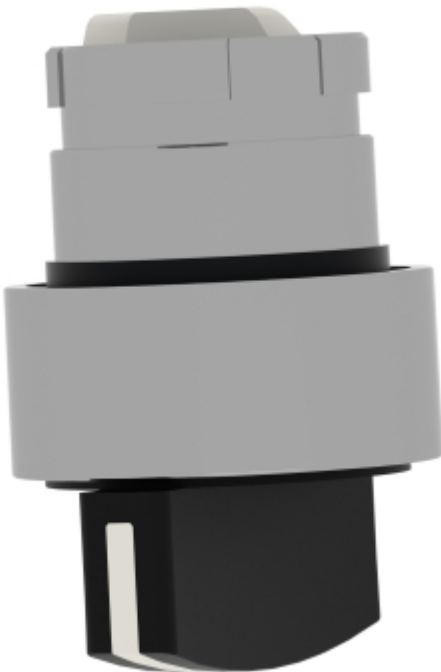
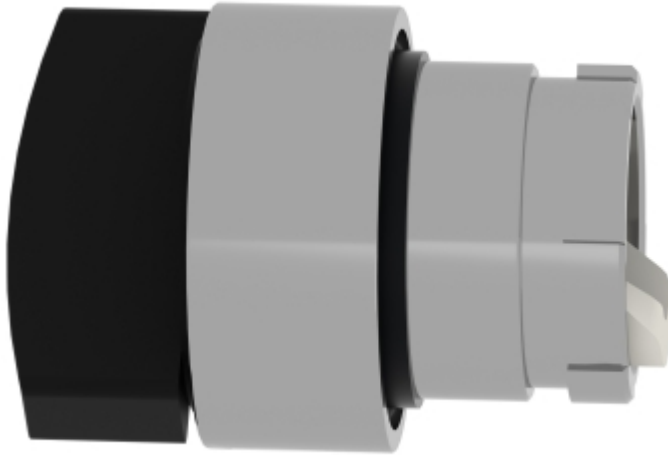
Metal screws for secure fix, grounding contact to the panel and anti-rotation
- 

Simple modular design facilitates post installation servicing, modification and adaptation of machines by non-specialists
- 

Available in sub-assemblies for easy mix and match of functionalities

Image of product / Alternate images

Alternative



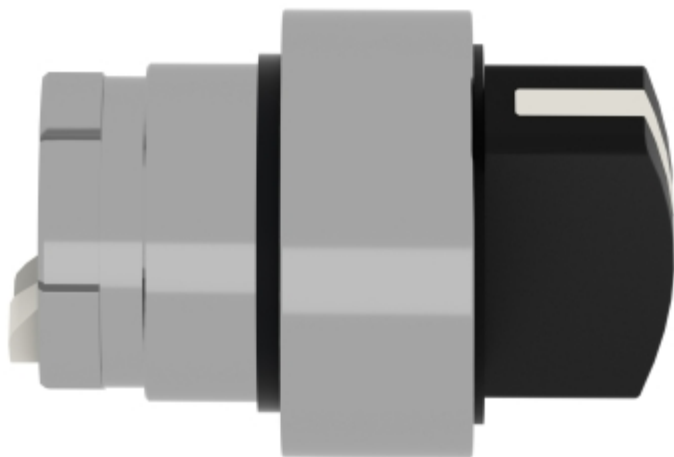




Image of product in real life situation

