

# Product datasheet

Specifications



## Ø 22 mm fixing hole - push button head with white lamp

ZB2BW31C

### Main

Range of product	Easy Harmony XB2
Product or component type	Head for illuminated push-button
Bezel material	Chromium plated metal
Component name	ZB2
Shape of signaling unit head	Round
Electrical circuit type	Control circuit
Type of operator	Spring return
Operator profile	White flush, unmarked
Device presentation	Basic element
Head type	Flush
Device short name	XB2
Sale per indivisible quantity	1

### Complementary

Mechanical durability	3000000 cycles
Mounting diameter	22.5 mm
Height	29 mm
width	29 mm
Depth	34 mm
Net weight	0.030 kg
Type of operator	spring return
Cap/operator or lens colour	White
Marking	Unmarked
Product certifications	CCC CE
customizable	No
Product compatibility	ZB2..C

### Environment

Ambient air temperature for operation	-25...70 °C
Ambient air temperature for storage	-40...70 °C
Vibration resistance	5 gn (f= 2...500 Hz) conforming to IEC 60068-2-6

<b>Shock resistance</b>	30 gn (duration = 18 ms) for half sine wave acceleration conforming to IEC 60068-2-27 50 gn (duration = 11 ms) for half sine wave acceleration conforming to IEC 60068-2-27
<b>Overvoltage category</b>	Class I conforming to IEC 60536
<b>IP degree of protection</b>	IP65
<b>IK degree of protection</b>	IK06
<b>Protective treatment</b>	TC/TH
<b>Standards</b>	GB/T 14048.5 EN/IEC 60947-5-1 GB/T 14048.1 EN/IEC 60947-1 EN/IEC 60947-5-4

## Packing Units

<b>Unit Type of Package 1</b>	PCE
<b>Number of Units in Package 1</b>	1
<b>Package 1 Height</b>	2.9 cm
<b>Package 1 Width</b>	2.85 cm
<b>Package 1 Length</b>	3.34 cm
<b>Package 1 Weight</b>	29.1 g
<b>Unit Type of Package 2</b>	S02
<b>Number of Units in Package 2</b>	150
<b>Package 2 Height</b>	15 cm
<b>Package 2 Width</b>	30 cm
<b>Package 2 Length</b>	40 cm
<b>Package 2 Weight</b>	5 kg
<b>Unit Type of Package 3</b>	P06
<b>Number of Units in Package 3</b>	3000
<b>Package 3 Height</b>	90 cm
<b>Package 3 Width</b>	60 cm
<b>Package 3 Length</b>	80 cm
<b>Package 3 Weight</b>	93.828 kg

## Environmental Data

Schneider Electric aims to achieve Net Zero status by 2050 through supply chain partnerships, lower impact materials, and circularity via our ongoing “Use Better, Use Longer, Use Again” campaign to extend product lifetimes and recyclability.

[How this information helps you >](#)

### Environmental footprint

Carbon footprint (kg.eq.CO2 per CR, Total Life cycle)	1
---	---

Environmental Disclosure

[Product Environmental Profile](#)

## Use Better

### Materials and Substances

Packaging without single use plastic	No
--------------------------------------	----

[EU RoHS Directive](#)

Pro-active compliance  
(Product out of EU RoHS legal scope)

SCIP Number

9e63340a-2371-4381-8f9a-5fba0ff349a4

REACH Regulation

[REACH Declaration](#)

China RoHS Regulation

[China RoHS declaration](#)

## Use Again

### Repack and remanufacture

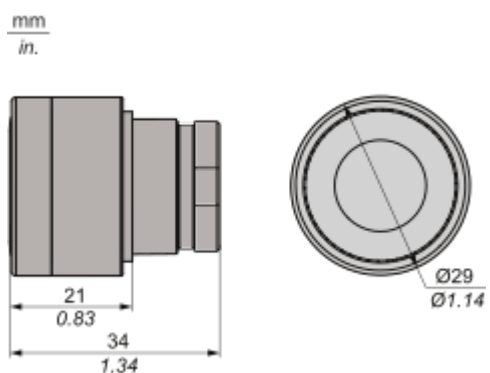
Circularity Profile	No need of specific recycling operations
---------------------	--

Take-back	No
-----------	----

Dimensions Drawings

Dimensions

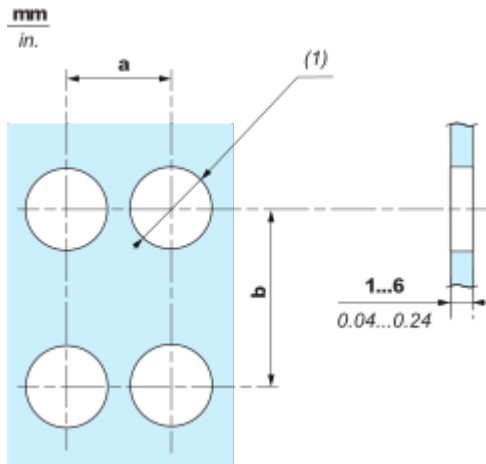
---



Mounting and Clearance

Mounting and Clearance

Panel cut-out



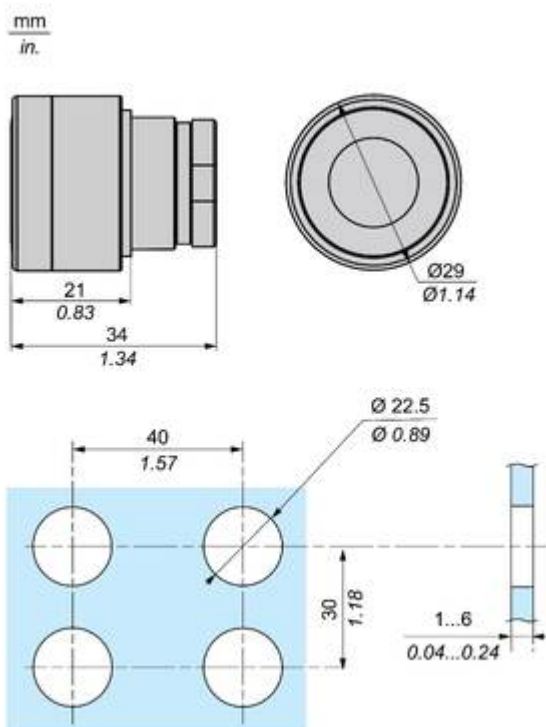
	Connection by Screw clamp terminals			
	a in mm	a in in.	b in mm	b in in.
•B2BA•C / •B2BL•C / •B2BP•C / •B2BS4•C / •B2BD•C / •B2BJ•C / •B2BG•C / •B2BW•C	40	1.57	30	1.18
•B2BC•C / •B2BS5•C / •B2BS8•C / •B2BT•C	40	1.57	40	1.57
•B2BR•C / •B2BS6•C	60	2.36	60	2.36

(1)  $\varnothing 22.5 \text{ mm} / 0.89 \text{ in. recommended } (\varnothing 22.3 \text{ mm }_0^{+0.4} / 0.88 \text{ in. }_0^{+0.016})$

Technical Illustration

Dimensions

---



Offer Marketing Illustration

Product benefits / Features

---

**Features**  
Easy Harmony XB2



- 

Metal bezels with metal fixing collars for impact endurance
- 

Designed to be used in numerous control and signaling applications
- 

Metal screws for secure fix, grounding contact to the panel and anti-rotation
- 

Simple modular design facilitates post installation servicing, modification and adaptation of machines by non-specialists
- 

Available in sub-assemblies for easy mix and match of functionalities

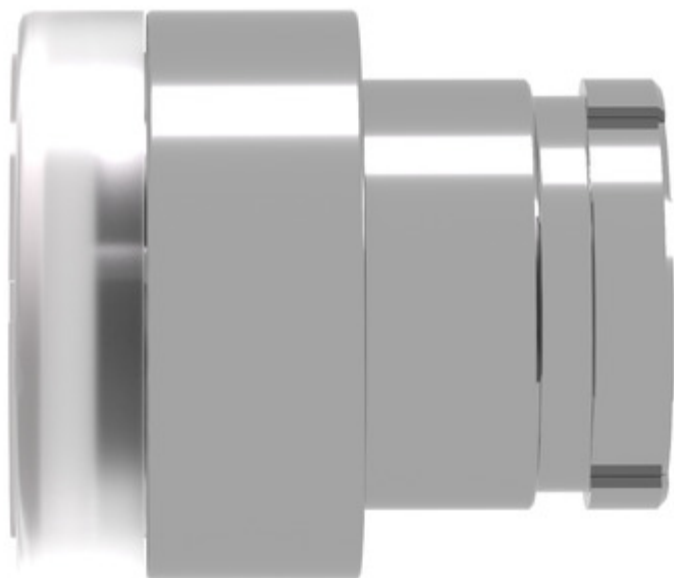
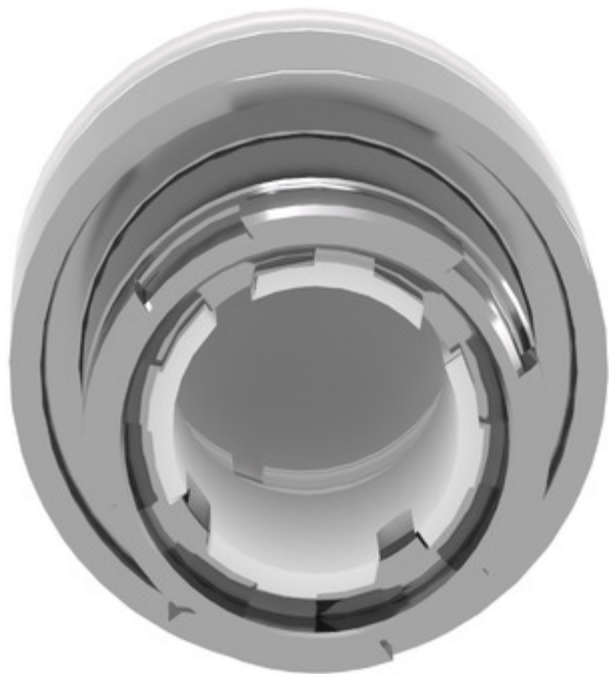
Image of product / Alternate images

Alternative

---







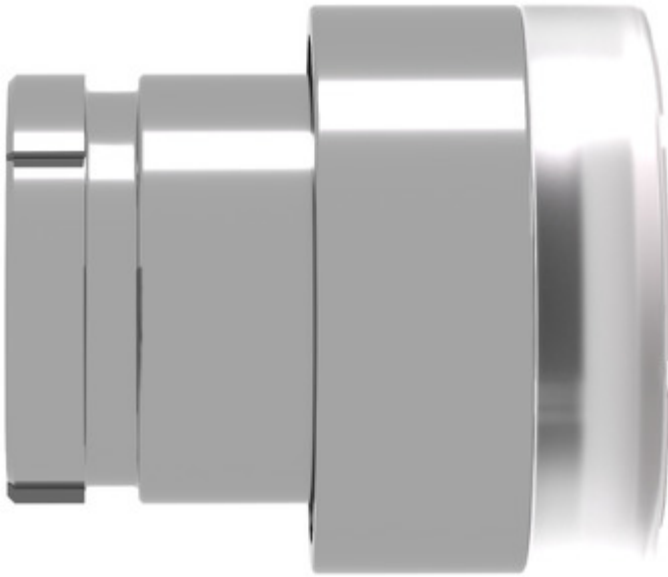


Image of product in real life situation

