

Product datasheet

Specifications



metal series pushbutton base -380V AC-50HZ LED orange-1NO contact- IEC640947-5-1

ZB2BWM51C

Main

Range of product	Easy Harmony XB2
Product or component type	Complete body/contact assembly and light block
Component name	ZB2
Body type	Body for illuminated control button
Sale per indivisible quantity	1
Device presentation	Basic element
Device short name	XB2
Contact operation	Slow-break

Complementary

Mounting diameter	22.5 mm
[Us] rated supply voltage	230...240 V
Contacts type and composition	1 NO
Connections - terminals	Screw clamps terminals
Bezel material	Chromium plated metal
Terminals description ISO n°1	(13-14)NO
[Ie] rated operational current AC	3 A 240 V AC-15
Auxiliary contacts operation	Standard
Bulb base	BA 9s
Bulb type	LED
[Ie] rated operational current DC	DC-13: 0.27 A at 250 V
NC auxiliary contacts	0
NO auxiliary contacts	1
Supply circuit type	AC
Supply frequency	50 Hz 60 Hz
Height	30 mm
width	40 mm
Depth	67 mm
Net weight	0.090 kg

Disclaimer: This documentation is not intended as a substitute for and is not to be used for determining suitability or reliability of these products for specific user applications

Connections - terminals	Screw clamp terminal, $\leq 2 \times 1.5 \text{ mm}^2$ with and without cable ends Screw clamp terminal, $\leq 1 \times 2.5 \text{ mm}^2$ with and without cable ends Screw clamp terminal, $\geq 1 \times 0.5 \text{ mm}^2$ with and without cable ends Faston terminals, connection size: 6.3 mm
Fixing mode	Fixing screw beneath head recommended torque: 0.8 N.m Fixing screw beneath head recommended torque: 1.0 N.m
Tightening torque	0.8...1.0 N.m
[Uimp] rated impulse withstand voltage	6 kV conforming to IEC 60947-1
[Ui] rated insulation voltage	600 V (pollution degree 3) conforming to IEC 60947-1
Contacts material	Silver alloy (Ag/Ni)
Contacts usage	Standard contacts
Fixing collar material	Zamak
Mechanical durability	3000000 cycles
Electrical connection	Captive screw clamp terminal
Light block colour	Orange
Light block supply	Direct
Light source	LED
Electrical reliability	$\Lambda < 10\text{exp}(-6)$ at 5 V, 1 mA in clean environment conforming to IEC 60947-5-4 $\Lambda < 10\text{exp}(-8)$ at 17 V, 5 mA in clean environment conforming to IEC 60947-5-4
[Ie] rated operational current	3 A at 240 V, AC-15, A600 conforming to IEC 60947-5-1 0.27 A at 250 V, DC-13, Q600 conforming to IEC 60947-5-1
Short-circuit protection	10 A gL fuse type gG conforming to IEC 60947-5-1
[Ith] conventional free air thermal current	10 A conforming to IEC 60947-5-1
Positive opening	Without
Shape of screw head	Cross compatible with Philips no 1 screwdriver Cross compatible with pozidriv No 1 screwdriver Slotted compatible with flat $\varnothing 4 \text{ mm}$ screwdriver Slotted compatible with flat $\varnothing 5.5 \text{ mm}$ screwdriver
Operating travel	2.88 mm (NO changing electrical state) 5.0 mm (total travel)
Electrical durability	1000000 cycles, AC-15, 3 A at 240 V, operating rate $< 3600 \text{ cyc/h}$, load factor: 0.5 conforming to IEC 60947-5-1 appendix C 1000000 cycles, DC-13, 0.27 A at 250 V, operating rate $< 3600 \text{ cyc/h}$, load factor: 0.5 conforming to IEC 60947-5-1 appendix C
Protective treatment	TC/TH
Signalling type	Steady
Current consumption	$< 20 \text{ mA}$
Service life	5000 h at rated voltage and 25 °C
Supply voltage limits	176...242 V AC 50/60 Hz
[Us] rated supply voltage	230...240 V AC 50/60 Hz
customizable	No

Environment

Vibration resistance	5 gn ($f = 2...500 \text{ Hz}$) conforming to IEC 60068-2-6
Standards	IEC 60947-5-1 IEC 60947-5-4 IEC 60947-1 GB/T 14048.1 GB/T 14048.5

Shock resistance	30 gn (duration = 18 ms) for half sine wave acceleration conforming to IEC 60068-2-27 50 gn (duration = 11 ms) for half sine wave acceleration conforming to IEC 60068-2-27
Product certifications	CE CCC
Product compatibility	ZB2..C
IK degree of protection	IK06
IP degree of protection	IP65
Ambient air temperature for operation	-25...70 °C
Ambient air temperature for storage	-40...70 °C
Resistance to fast transients	2 kV conforming to IEC 61000-4-4
Resistance to electrostatic discharge	4 kV on contact (on metal parts) conforming to IEC 61000-4-2 8 kV in free air (in insulating parts) conforming to IEC 61000-4-2
Resistance to electromagnetic fields	10 V/m conforming to IEC 61000-4-3
Surge withstand	1 kV line to line conforming to IEC 61000-4-5 2 kV line to earth conforming to IEC 61000-4-5
Overvoltage category	Class I conforming to IEC 60536

Packing Units

Unit Type of Package 1	PCE
Number of Units in Package 1	1
Package 1 Height	3.26 cm
Package 1 Width	4.279 cm
Package 1 Length	7.626 cm
Package 1 Weight	71 g
Unit Type of Package 2	S02
Number of Units in Package 2	120
Package 2 Height	15 cm
Package 2 Width	30 cm
Package 2 Length	40 cm
Package 2 Weight	8.811 kg
Unit Type of Package 3	P06
Number of Units in Package 3	2400
Package 3 Height	90 cm
Package 3 Width	60 cm
Package 3 Length	80 cm
Package 3 Weight	177.36 kg

Environmental Data

Schneider Electric aims to achieve Net Zero status by 2050 through supply chain partnerships, lower impact materials, and circularity via our ongoing “Use Better, Use Longer, Use Again” campaign to extend product lifetimes and recyclability.

[How this information helps you >](#)

Environmental footprint

Carbon footprint (kg.eq.CO2 per CR, Total Life cycle)	1
---	---

Environmental Disclosure

[Product Environmental Profile](#)

Use Better

Materials and Substances

Packaging made with recycled cardboard	No
--	----

Packaging without single use plastic	Yes
--------------------------------------	-----

[EU RoHS Directive](#)

Pro-active compliance (Product out of EU RoHS legal scope)

SCIP Number

9e63340a-2371-4381-8f9a-5fba0ff349a4

REACH Regulation

[REACH Declaration](#)

China RoHS Regulation

[China RoHS declaration](#)

Use Again

Repack and remanufacture

Circularity Profile

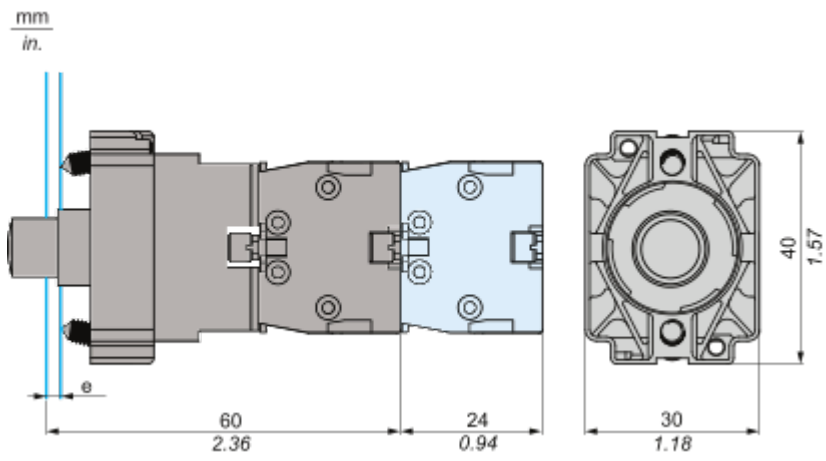
No need of specific recycling operations

Take-back

No

Dimensions Drawings

Dimensions

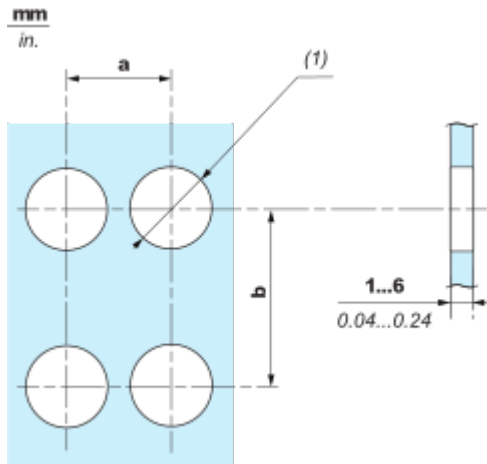


e: clamping thickness 1 to 6 mm / 0.04 to 0.24 in.

Mounting and Clearance

Mounting and Clearance

Panel cut-out

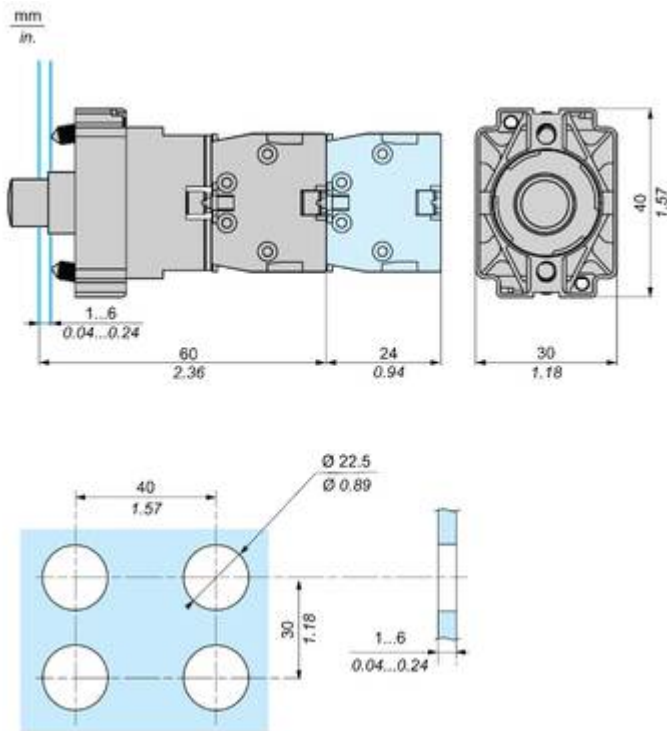


	Connection by Screw clamp terminals			
	a in mm	a in in.	b in mm	b in in.
•B2BA•C / •B2BL•C / •B2BP•C / •B2BS4•C / •B2BD•C / •B2BJ•C / •B2BG•C / •B2BW•C	40	1.57	30	1.18
•B2BC•C / •B2BS5•C / •B2BS8•C / •B2BT•C	40	1.57	40	1.57
•B2BR•C / •B2BS6•C	60	2.36	60	2.36

(1) \varnothing 22.5 mm / 0.89 in. recommended (\varnothing 22.3 mm $_{0}^{+0.4}$ / 0.88 in. $_{0}^{+0.016}$)

Technical Illustration

Dimensions



Offer Marketing Illustration

Product benefits / Features

Features
Easy Harmony XB2



- 

Metal bezels with metal fixing collars for impact endurance
- 

Designed to be used in numerous control and signaling applications
- 

Metal screws for secure fix, grounding contact to the panel and anti-rotation
- 

Simple modular design facilitates post installation servicing, modification and adaptation of machines by non-specialists
- 

Available in sub-assemblies for easy mix and match of functionalities

Image of product / Alternate images

Alternative



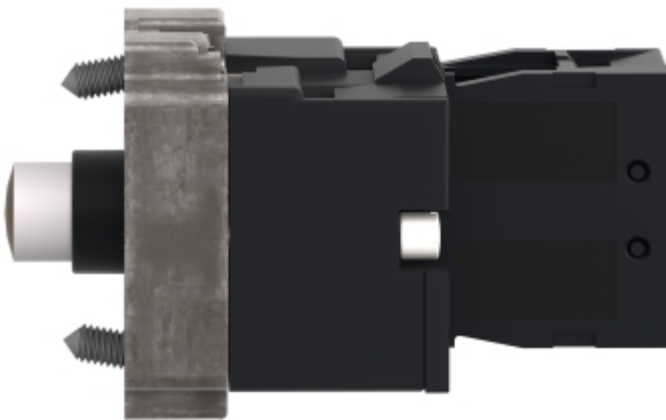




Image of product in real life situation

