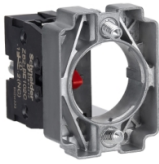


Product datasheet

Specifications



body for control button - Ø 22 mm - 1 NC contact

ZB2BZ102C

Main

Range of product	Easy Harmony XB2
Product or component type	Complete body/contact assembly
Component name	ZB2
Body type	Body for control button
Sale per indivisible quantity	1
Device presentation	Basic sub-assemblies
Device short name	XB2
Contact operation	Slow-break

Complementary

Mounting diameter	22.5 mm
Contacts type and composition	1 NC
Connections - terminals	Screw clamps terminals
Bezel material	Chromium plated metal
Terminals description ISO n°1	(11-12)NC
[Ie] rated operational current AC	3 A 240 V AC-15
[Ie] rated operational current DC	DC-13: 0.27 A at 250 V
NC auxiliary contacts	1
NO auxiliary contacts	0
Height	40 mm
width	30 mm
Depth	42.5 mm
Net weight	0.04 kg
Connections - terminals	Screw clamp terminal, $\leq 2 \times 1.5 \text{ mm}^2$ with and without cable ends Screw clamp terminal, $\leq 1 \times 2.5 \text{ mm}^2$ with and without cable ends Screw clamp terminal, $\geq 1 \times 0.5 \text{ mm}^2$ with and without cable ends Faston terminals, connection size: 6.3 mm
Fixing mode	Fixing screw beneath head recommended torque: 0.8 N.m Fixing screw beneath head recommended torque: 1.0 N.m
Tightening torque	0.8...1.0 N.m
Contact code designation	A600 AC-15, $U_e = 240 \text{ V}$, $I_e = 3 \text{ A}$ conforming to IEC 947-5-1 appendix A A600 AC-15, $U_e = 600 \text{ V}$, $I_e = 1.2 \text{ A}$ conforming to IEC 947-5-1 appendix A Q600 DC-13, $U_e = 250 \text{ V}$, $I_e = 0.27 \text{ A}$ conforming to IEC 947-5-1 appendix A Q600 DC-13, $U_e = 600 \text{ V}$, $I_e = 0.1 \text{ A}$ conforming to IEC 947-5-1 appendix A

[Uimp] rated impulse withstand voltage	6 kV conforming to IEC 60947-1
[Ui] rated insulation voltage	600 V (pollution degree 3) conforming to IEC 60947-1
Rated operational power in W	40 W DC-13 for 1000000 cycles, operating rate <60 cyc/mn at 120 V, load factor = 0.5 conforming to IEC 60947-5-1 48 W DC-13 for 1000000 cycles, operating rate <60 cyc/mn at 48 V, load factor = 0.5 conforming to IEC 60947-5-1 65 W DC-13 for 1000000 cycles, operating rate <60 cyc/mn at 24 V, load factor = 0.5 conforming to IEC 60947-5-1
Contacts material	Silver alloy (Ag/Ni)
Contacts usage	Standard contacts
Fixing collar material	Zamak
Mechanical durability	3000000 cycles
Electrical connection	Captive screw clamp terminal
Light block colour	None
Light block supply	Without supply
Light source	Without
Electrical reliability	$\Lambda < 10\exp(-6)$ at 5 V, 1 mA in clean environment conforming to IEC 60947-5-4 $\Lambda < 10\exp(-8)$ at 17 V, 5 mA in clean environment conforming to IEC 60947-5-4
[Ie] rated operational current	3 A at 240 V, AC-15, A600 conforming to IEC 60947-5-1 0.27 A at 250 V, DC-13, Q600 conforming to IEC 60947-5-1
Short-circuit protection	10 A gL fuse type gG conforming to IEC 60947-5-1
[Ith] conventional free air thermal current	10 A conforming to IEC 60947-5-1
Positive opening	With conforming to IEC 60947-5-1 appendix K
Shape of screw head	Cross compatible with Philips no 1 screwdriver Cross compatible with pozidriv No 1 screwdriver Slotted compatible with flat Ø 4 mm screwdriver Slotted compatible with flat Ø 5.5 mm screwdriver
Operating travel	1.5 mm (NO changing electrical state) 5 mm (total travel)
Electrical durability	1000000 cycles, AC-15, 3 A at 240 V, operating rate <3600 cyc/h, load factor: 0.5 conforming to IEC 60947-5-1 appendix C 1000000 cycles, DC-13, 0.27 A at 250 V, operating rate <3600 cyc/h, load factor: 0.5 conforming to IEC 60947-5-1 appendix C
Protective treatment	TC/TH
customizable	No

Environment

Vibration resistance	5 gn (f= 2...500 Hz) conforming to IEC 60068-2-6
Standards	IEC 60947-1 IEC 60947-5-1 IEC 60947-5-4 GB/T 14048.1 GB/T 14048.5
Shock resistance	30 gn (duration = 18 ms) for half sine wave acceleration conforming to IEC 60068-2-27 50 gn (duration = 11 ms) for half sine wave acceleration conforming to IEC 60068-2-27
Product certifications	CCC CE
Electrical shock protection class	Class II conforming to IEC 61140
Product compatibility	ZB2..C

Ambient air temperature for operation	-25...70 °C
Ambient air temperature for storage	-40...70 °C

Packing Units

Unit Type of Package 1	PCE
Number of Units in Package 1	1
Package 1 Height	2.99 cm
Package 1 Width	3.5 cm
Package 1 Length	4.01 cm
Package 1 Weight	38.1 g
Unit Type of Package 2	CAR
Number of Units in Package 2	150
Package 2 Height	15 cm
Package 2 Width	30 cm
Package 2 Length	40 cm
Package 2 Weight	6.03 kg
Unit Type of Package 3	P06
Number of Units in Package 3	2400
Package 3 Height	95 cm
Package 3 Width	60 cm
Package 3 Length	80 cm
Package 3 Weight	104.98 kg

Environmental Data

Schneider Electric aims to achieve Net Zero status by 2050 through supply chain partnerships, lower impact materials, and circularity via our ongoing “Use Better, Use Longer, Use Again” campaign to extend product lifetimes and recyclability.

[How this information helps you >](#)

Environmental footprint

Carbon footprint (kg.eq.CO2 per CR, Total Life cycle)	1
---	---

Environmental Disclosure

[Product Environmental Profile](#)

Use Better

Materials and Substances

Packaging without single use plastic	No
--------------------------------------	----

[EU RoHS Directive](#)

Pro-active compliance
(Product out of EU RoHS legal scope)

SCIP Number

9e63340a-2371-4381-8f9a-5fba0ff349a4

REACH Regulation

[REACH Declaration](#)

China RoHS Regulation

[China RoHS declaration](#)

Use Again

Repack and remanufacture

Circularity Profile

No need of specific recycling operations

WEEE



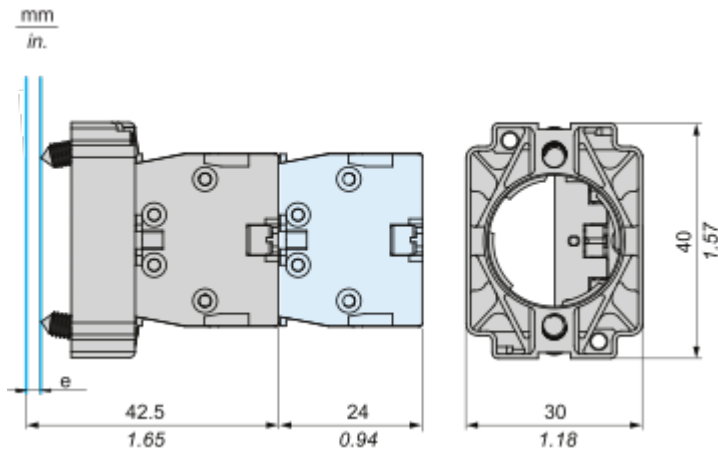
The product must be disposed on European Union markets following specific waste collection and never end up in rubbish bins

Take-back

No

Dimensions Drawings

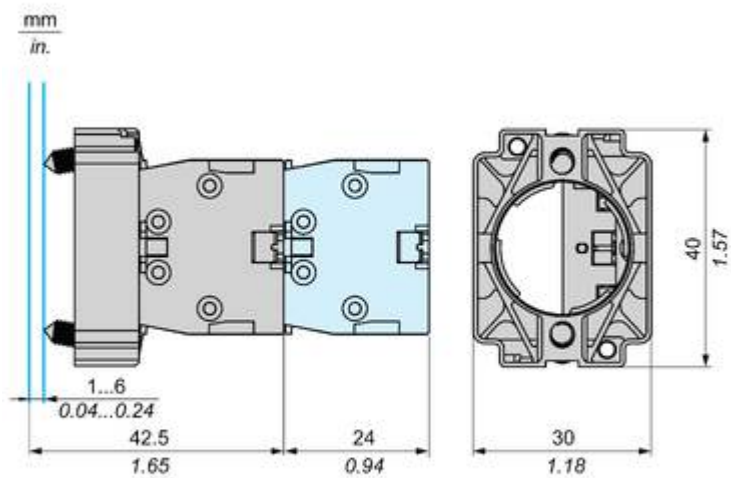
Dimensions



e: clamping thickness 1 to 6 mm / 0.04 to 0.24 in.

Technical Illustration

Dimensions



Offer Marketing Illustration

Product benefits / Features

Features
Easy Harmony XB2



- 

Metal bezels with metal fixing collars for impact endurance
- 

Designed to be used in numerous control and signaling applications
- 

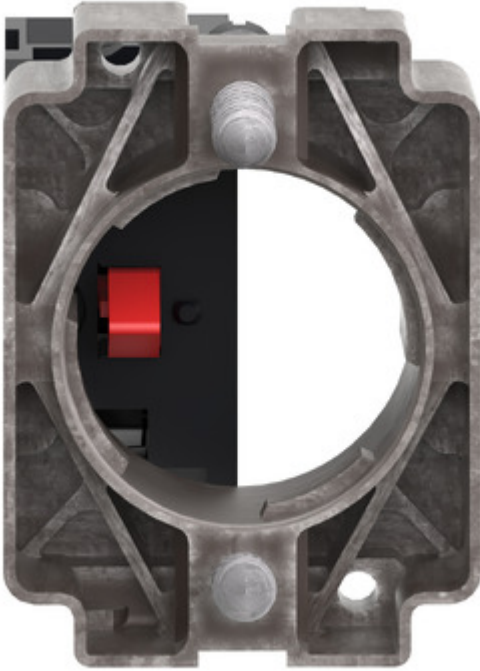
Metal screws for secure fix, grounding contact to the panel and anti-rotation
- 

Simple modular design facilitates post installation servicing, modification and adaptation of machines by non-specialists
- 

Available in sub-assemblies for easy mix and match of functionalities

Image of product / Alternate images

Alternative



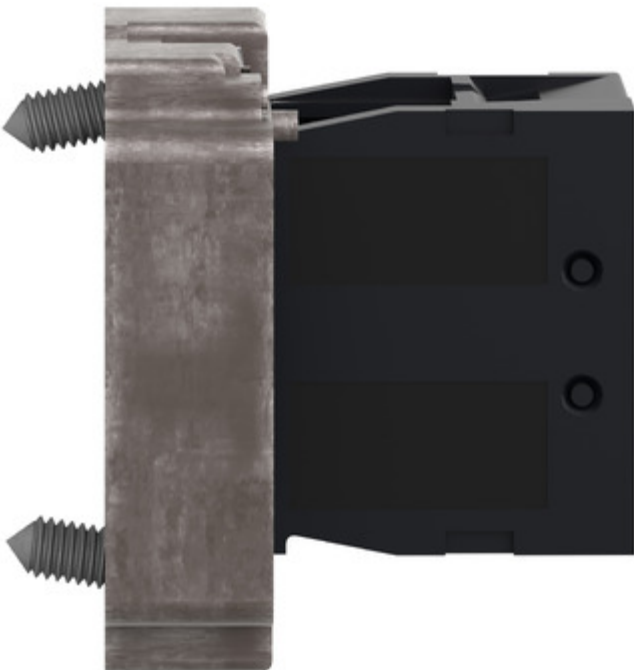




Image of product in real life situation

